



## 2.0" ISO Clip

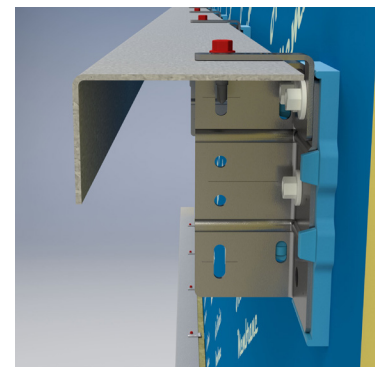
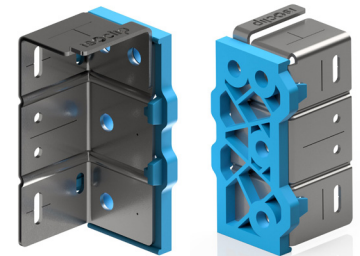
ISO Clip significantly reduces thermal bridging within external rain screen assemblies improving insulation effective-R values while providing flexibility for facade design. It is a key building component that helps to achieve thermally efficient building envelopes without compromising on design intent of the project, essential for energy conservation and our shared sustainable future.

### Technical Information:

The ISO Clip creates a thermal break separating the interior of the building from the exterior. Its unique design features reduce thermal transfer through the building envelope. The clip accommodates a variety of insulation thickness or wall depths, eliminating the need for shims and can accommodate insulation from 2" - 3.5". It is engineered to perform on all substrates including concrete, concrete block, steel studs or wood.

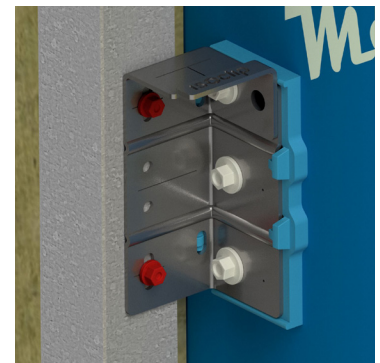
### Material Composition:

16ga ASTM A792 [Galvalume]<sup>TM</sup> or ASTM 653 [Galvanized] steel clip with an integral glass fibre reinforced polyamide thermal isolator pad. Also available fully encapsulated in a special coating for use in Salmon-Safe specified projects.



*"ISO Clip helps protect downstream water quality and is consistent for use in Salmon-Safe projects."*

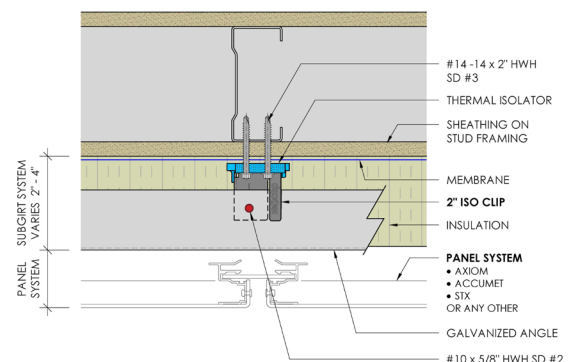
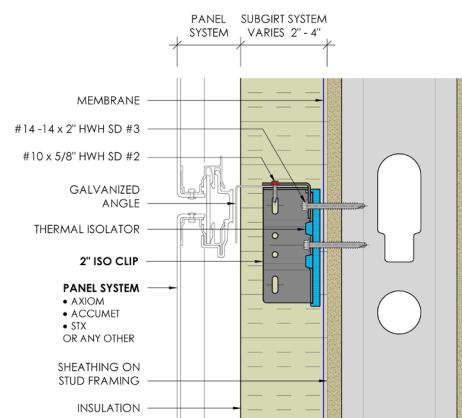
– Dan Kent, Salmon-Safe



### Next Generation Performance:

ISO Clip is suitable for either vertical or horizontal sub-girts. Its versatility, thermal performance, and ease of use make ISO Clip the product to specify for high-performance building envelopes. The thermal performance of the clip has been modeled and evaluated by the industry leaders, Morrison Hershfield.

### Horizontal Subgirt



ISOCLIPS.COM  
1-844-740-2050  
info@isoclips.com

Fabricated by  
Northern Facades Ltd.  
Northernfacades.com

## 2.0" ISO Clip

### FASTENER

#### RECOMMENDATIONS:

Girt Fastener: 10-16 x 5/8" Ind. Hex Washer Head (5/16AF)

Steel Stud Assembly: 14-14 x 2" Ind. Hex Washer Head (5/16AF)

Wood Stud Fasteners: #14 HWH cladding (metal to wood) fastener

Concrete Wall: 2-1/4" long #14 Tapcons

### Key Features & Benefits of the ISO Clip:

#### Efficient:

- Improved building energy efficiency through a reduction in thermal bridging utilizing an optimized thermal pad design
- High load capacity, less ISO Clips may be required compared to synthetic or aluminum clips which means less to install and less thermal bridging
- ISO Clips may assist towards achieving multiple LEED V4 credits as a component part of the wall assembly
- ASHRAE 90.1, NECB, SB-10 compliant, with thermal analysis available
- ISO Clip has successfully passed the NFPA 285 Standard Test Method for Evaluation of Fire Propagation Characteristics of Exterior Wall Assemblies Containing Minor Combustible Components and the CAN / ULC S134-13 Standard Test Method for Fire Test of Exterior Wall Assemblies

#### Performance:

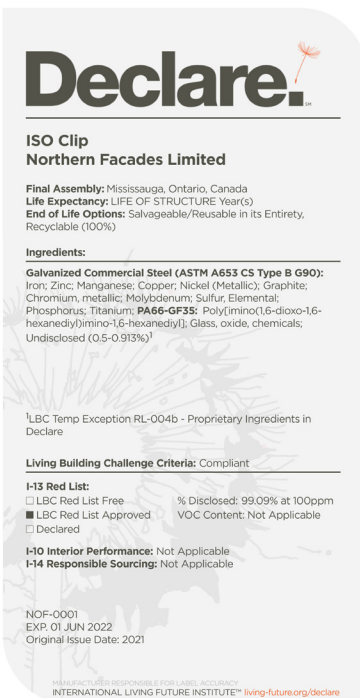
- Adjustment up to + / - 1/4" wall deviation, no shims required
- Built in "helping hand" for ease and speed of installation
- Always installed in the same direction regardless of horizontal or vertical girt orientation.
- 2.0" ISO Clip is suitable for 2" to 3.5" of insulation

#### Availability & Pricing:

- Cost Effective
- North American Made
- Readily Available Stock from a growing network of distributors

Specifying ISO Clip is simple using these leading platforms

or visit [www.isoclips.com](http://www.isoclips.com)



### Vertical Subgirt

